

BRIDAL

COLLECTION



Hudson
JEWELERS

FAMILY OWNED SINCE 1944



A



B



C

Classic *elegance*



D



E



F



G



H



J

AC
ASHI COUTURE

A. 7/8 carat tw semi-mount ring (round center stone 1.50-2.00 ct.) B. 5/8 carat tw semi-mount ring (oval center stone 1.50-2.00 ct.) C. 5/8 carat tw semi-mount ring (round center stone 1.50-2.00 ct.) D. 5/8 carat tw semi-mount ring (emerald center stone 1.50-2.00 ct.) E. 3/8 carat tw semi-mount ring (round center stone 1.50-2.00 ct.) F. 1 1/10 carat tw semi-mount ring (round center stone 1.50-2.00 ct.) G. 3/4 carat tw semi-mount ring (oval center stone 1.50-2.00 ct.) H. 3/4 carat tw semi-mount ring (round center stone 1.50-2.00 ct.) J. 7/8 carat tw semi-mount ring (emerald center stone 1.50-2.00 ct.)



A



B



C



E



D



F



G

AC
ASHI COUTURE

A. 1/3 carat tw semi-mount ring (oval center stone 1.50-2.00 ct.) B. 5/8 carat tw semi-mount ring (pear center stone 1.50-2.00 ct.) C. 3/4 carat tw semi-mount ring (pear center stone 1.50-2.00 ct.) D. 3/8 carat tw semi-mount ring (oval center stone 1.50-2.00 ct.) E. 5/8 carat tw semi-mount ring (oval center stone 1.50-2.00 ct.) F. 1/5 carat tw semi-mount ring (round center stone 1.50-2.00 ct.) G. 5/8 carat tw semi-mount ring (oval center stone 1.50-2.00 ct.)

*Center stone sold separately
All styles available in various shapes and center sizes



A



B



D



C



E



F



G

 Okari

A. 1 1/4 carat tw semi-mount ring (emerald center stone 4.50-5.50 ct.) B. 1 1/3 carat tw semi-mount ring (princess center stone 3.65-4.50 ct.) C. 1 1/4 carat tw semi-mount ring (round center stone 3.65-4.50 ct.) D. 3/4 carat tw semi-mount ring (oval center stone 3.65-4.50 ct.) E. 1 carat tw semi-mount ring (marquise center stone 4.50-5.50 ct.) F. 1 1/4 carat tw semi-mount ring (oval center stone 2.75-3.50 ct.) G. 1/3 carat tw semi-mount ring (oval center stone 3.65-4.50 ct.)



A



C



B

Simply *beautiful*



D



E



F



G



H

 akari

A. 1 carat tw semi-mount ring (oval center stone 3.65-4.50 ct.) B. 1/2 carat tw semi-mount ring (emerald center stone 2.75-3.50 ct.) C. 3/4 carat tw semi-mount ring (round center stone 1.65-2.35 ct.) D. 1/2 carat tw semi-mount ring (oval center stone 2.75-3.50 ct.) E. 1/10 carat tw semi-mount ring (emerald center stone 3.65-4.50 ct.) F. 7/8 carat tw semi-mount ring (round center stone 1.65-2.35 ct.) G. 1 1/3 carat tw semi-mount ring (oval center stone 2.75-3.50 ct.) H. 1 carat tw semi-mount ring (emerald center stone 3.65-4.50 ct.)

*Center stone sold separately
All styles available in various shapes and center sizes



A



B



C



D



E

Yours *forever*



F



G



H



J

A. 1 carat tw semi-mount ring (oval center stone 1.00-1.50 ct.) B. 1 1/3 carat tw semi-mount ring (round center stone 1.25-1.75 ct.) C. 1 1/10 carat tw semi-mount ring (emerald center stone 0.85-1.20 ct.) D. 1 1/5 carat tw semi-mount ring (cushion center stone 1.00-1.50 ct.) E. 2 1/10 carat tw semi-mount ring (round center stone 1.25-1.75 ct.) F. 5/8 carat tw semi-mount ring (oval center stone 1.00-1.50 ct.) G. 3/4 carat tw semi-mount ring (oval center stone 1.00-1.50 ct.) H. 5/8 carat tw semi-mount ring (cushion center stone 0.85-1.20 ct.) J. 5/8 carat tw semi-mount ring (emerald center stone 0.85-1.20 ct.)



A



B



C



D



E



F



G

A. 1 1/3 carat tw semi-mount ring (round center stone 1.75-2.50 ct.) B. 1 1/3 carat tw semi-mount ring (round center stone 0.85-1.20 ct.) C. 1 1/2 carat tw semi-mount ring (round center stone 1.75-2.50 ct.) D. 1 1/5 carat tw semi-mount ring (emerald center stone 1.25-1.75 ct.) E. 5/8 carat tw semi-mount ring (round center stone 0.85-1.20 ct.) F. 1 1/2 carat tw semi-mount ring (oval center stone 1.50-2.00 ct.) G. 1 3/4 carat tw semi-mount ring (round center stone 1.75-2.50 ct.)

*Center stone sold separately



A



B

C



D



H



E

F

G



J



K

A. 1/2 carat tw semi-mount ring (cushion center stone 1.25-1.75 ct.) B. 1/5 carat tw semi-mount ring (oval center stone 1.00-1.50 ct.) C. 1/5 carat tw semi-mount ring (round center stone 0.85-1.20 ct.) D. 1/2 carat tw semi-mount ring (round center stone 1.25-1.75 ct.) E. 3/8 carat tw semi-mount ring (princess center stone 0.85-1.20 ct.) F. 1/2 carat tw semi-mount ring (round center stone 0.85-1.20 ct.) G. 3/8 carat tw semi-mount ring (round center stone 0.85-1.20 ct.) H. 1/4 carat tw semi-mount ring (round center stone 0.85-1.20 ct.) J. 3/8 carat tw semi-mount ring (round center stone 0.85-1.20 ct.) K. 3/8 carat tw semi-mount ring (round center stone 0.85-1.20 ct.)



A



B



C

D

E

Ready to *glow*



F

G



H



J



K

A. 1/2 carat tw semi-mount ring (round center stone 0.85-1.20 ct.) B. 1/4 carat tw semi-mount ring (round center stone 0.85-1.20 ct.) C. 1/2 carat tw semi-mount ring (round center stone 0.85-1.20 ct.) D. 1/2 carat tw semi-mount ring (round center stone 0.85-1.20 ct.) E. 3/8 carat tw semi-mount ring (round center stone 0.85-1.20 ct.) F. 1/6 carat tw semi-mount ring (round center stone 0.85-1.20 ct.) G. 1/2 carat tw semi-mount ring (round center stone 0.85-1.20 ct.) H. 1/6 carat tw semi-mount ring (round center stone 0.85-1.20 ct.) J. 1/5 carat tw semi-mount ring (round center stone 0.85-1.20 ct.) K. 1/3 carat tw semi-mount ring (round center stone 0.85-1.20 ct.)

*Center stone sold separately



A



B



C

A new *look*



D



E



F



H



G



J

A. 5/8 carat tw semi-mount ring (oval center stone 1.00-1.50 ct.) B. 5/8 carat tw semi-mount ring (cushion center stone 0.85-1.20 ct.) C. 3/8 carat tw semi-mount ring (oval center stone 0.60-0.85 ct.) D. 1/3 carat tw semi-mount ring (round center stone 0.85-1.20 ct.) E. 1/3 carat tw semi-mount ring (emerald center stone 0.85-1.20 ct.) F. 5/8 carat tw semi-mount ring (marquise center stone 1.00-1.40 ct.) G. 1/3 carat tw semi-mount ring (oval center stone 1.25-1.75 ct.) H. 7/8 carat tw semi-mount ring (oval center stone 1.00-1.40 ct.) J. 1/2 carat tw semi-mount ring (emerald center stone 0.85-1.20 ct.)



A



B



C



D



E



F



G

A. 3/8 carat tw semi-mount ring (princess center stone 0.85-1.20 ct.) B. 1/8 carat tw semi-mount ring (round center stone 0.85-1.20 ct.) C. 1/2 carat tw semi-mount ring (round center stone 0.85-1.20 ct.) D. 7/8 carat tw semi-mount ring (princess center stone 0.85-1.20 ct.) E. 1/2 carat tw semi-mount ring (round center stone 1.00-1.40 ct.) F. 3/4 carat tw semi-mount ring (round center stone 0.85-1.20 ct.) G. 3/4 carat tw semi-mount ring (round center stone 0.85-1.20 ct.)

*Center stone sold separately



A



B



C



D



F



E



G



A. 1 carat tw engagement ring (3/8 carat pear cut center) B. 1 carat tw engagement ring (3/8 carat round cut center) C. 1 carat tw engagement ring (1/2 carat emerald cut center) D. 1/2 carat tw engagement ring (1/4 carat emerald cut center) E. 1/2 carat tw engagement ring (1/3 carat emerald cut center) F. 3/4 carat tw engagement ring (1/2 carat oval cut center) G. 3/4 carat tw engagement ring (1/2 carat round cut center)



A



B



E



C



D

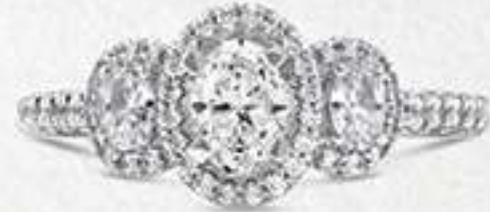


F

Made in *heaven*



G



J



H

BDO
collection

A. 7/8 carat tw engagement ring (1/2 carat round cut center) B. 1/2 carat tw engagement ring (1/3 carat oval cut center) C. 3/4 carat tw engagement ring (3/8 carat princess cut center) D. 5/8 carat tw engagement ring (1/2 carat round cut center) E. 5/8 carat tw engagement ring (1/2 carat emerald cut center) F. 5/8 carat tw engagement ring (1/4 carat oval cut center) G. 1 carat tw engagement ring (3/8 carat round cut center) H. 3/4 carat tw engagement ring (1/2 carat oval cut center) J. 1 carat tw engagement ring (3/8 carat oval cut center)

Engagement ring includes center stone



A



B



C



D



F



E

Eternal *love*



G



H



J



A. 3/4 carat tw engagement ring (1/2 carat marquise cut center) B. 3/4 carat tw engagement ring (1/2 carat oval cut center) C. 5/8 carat tw engagement ring (1/2 carat oval cut center) D. 3/4 carat tw engagement ring (1/2 carat emerald cut center) E. 1/2 carat tw engagement ring (1/4 carat emerald cut center) F. 7/8 carat tw engagement ring (1/2 carat emerald cut center) G. 1/2 carat tw engagement ring (1/4 carat princess cut center) H. 5/8 carat tw engagement ring (3/8 carat oval cut center) J. 5/8 carat tw engagement ring (1/2 carat pear cut center)



A



B



C



D



E



F



G

SPDO
collection

A. 1/2 carat tw engagement ring (1/3 carat oval cut center) B. 3/4 carat tw engagement ring (1/2 carat round cut center)
C. 1/2 carat tw engagement ring (1/3 carat oval cut center) D. 1/2 carat tw engagement ring (1/5 carat round cut center)
E. 5/8 carat tw engagement ring (1/2 carat round cut center) F. 1 carat tw engagement ring (5/8 carat round cut center)
G. 1/2 carat tw engagement ring (1/3 carat oval cut center)

Engagement ring includes center stone



A



B



C



D



E



F



G


LOVEBRIGHT

A. 3/4 carat tw engagement ring B. 1/2 carat tw engagement ring C. 3/4 carat tw engagement ring D. 1/2 carat tw engagement ring
E. 1/2 carat tw engagement ring F. 1/2 carat tw engagement ring G. 1/2 carat tw engagement ring



A



B

Shine *brightly*



C



D



F



E



G



H



LOVEBRIGHT

A. 5/8 carat tw engagement ring B. 1 carat tw engagement ring C. 1/2 carat tw engagement ring D. 3/4 carat tw engagement ring
E. 1/2 carat tw engagement ring F. 5/8 carat tw engagement ring G. 1/2 carat tw engagement ring H. 1/2 carat tw engagement ring

Some styles available in different carat weights



C



D



A



B



E



F

Always and *forever*



G



H



J



FUSION DIAMONDS

- A. 1/2 carat tw engagement ring B. 1 carat tw engagement ring C. 1/2 carat tw engagement ring D. 5/8 carat tw engagement ring
 E. 1/2 carat tw engagement ring F. 3/4 carat tw engagement ring G. 1 carat tw engagement ring H. 1/2 carat tw engagement ring
 J. 3/4 carat tw engagement ring



A



B



C



D



E



F



FUSION DIAMONDS

A. 7/8 carat tw engagement ring B. 1 1/6 carat tw engagement ring C. 1/2 carat tw engagement ring D. 5/8 carat tw engagement ring E. 3/8 carat tw engagement ring F. 1/2 carat tw engagement ring

Some styles available in different carat weights



A



B



C



B⁺ with Eng Ring



D



E



F



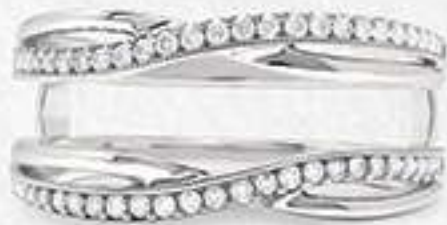
G

INSERTS

A. 1/2 carat tw diamond insert B. 1 carat tw diamond insert C. 3/4 carat tw diamond insert D. 1 1/10 carat tw diamond insert
E. 1/2 carat tw diamond insert F. 1/3 carat tw diamond insert G. 1/2 carat tw diamond insert



A



B



C



D



E



F



G

Effortless *grace*



H



J



K



L

INSERTS

- A. 1/3 carat tw diamond insert B. 1/4 carat tw diamond insert C. 1/2 carat tw diamond insert D. 1/2 carat tw diamond insert
 E. 3/8 carat tw diamond insert F. 1/2 carat tw diamond insert G. 1/3 carat tw diamond insert H. 5/8 carat tw diamond insert
 J. 3/4 carat tw diamond insert K. 3/4 carat tw diamond insert L. 1/2 carat tw diamond insert

¹Engagement ring sold separately



A



C



B

A Perfect *match*



D



F



E



G



H

INSERTS

A. Sapphire & Diamond insert B. Sapphire & Diamond insert C. Sapphire & Diamond insert D. Emerald & Diamond insert
 E. Emerald & Diamond insert F. Sapphire & Diamond insert G. Ruby & Diamond insert H. Sapphire & Diamond insert



BANDS

A. 1 carat tw east-west band B. 3 carat tw round eternity diamond band C. 1 carat tw east-west band D. 3 carat tw round eternity diamond band E. 3 carat tw oval eternity diamond band F. 3 carat tw emerald eternity diamond band G. 1 carat tw east-west band H. 5/8 carat tw 4-stone wide band J. 5/8 carat tw 4-stone mixed shape band K. 5/8 carat tw 4-stone mixed shape band L. 5/8 carat tw 4-stone wide band



A



C



B

Boundless *love*



D



E



F



G



H



J

K



L



M

BANDS

A. 1 carat tw 11-stone band B. 1 carat tw channel-set band C. 1 carat tw milgrain band D. 1/2 carat tw 3-row diamond band E. 1 1/4 carat tw 3-row diamond band F. 1/4 carat tw pave-set band G. 1 carat tw prong-set band H. 5/8 carat tw zig-zag band J. 1 1/2 carat tw 5-stone band K. 1 carat tw 7-stoneband L. 1 1/5 carat tw 2-row diamond band M. 5/8 carat tw east-west band



B



C



A



D



E



F



G

BANDS

A. 3/4 carat tw fashion band B. 1 carat tw 5-stone band C. 1 5/8 carat tw wide band D. 1 carat tw 5-stone pear halo band
E. 1 carat tw 5-stone round halo band F. 1 carat tw 5-stone emerald halo band G. 1 carat tw 5-stone oval halo band

Some styles available in different carat weights



A



B



C



D



G



H



J



K



F



E



L



M



N



P

Q



R

S

STACKABLE BANDS

A. 1/10 carat tw stack band B. 1/4 carat tw channel-set band C. 1/3 carat tw stack band D. 1/10 carat tw stack band E. 1/2 carat tw stack band F. 1/10 carat tw stack band G. 1/4 carat tw stack band H. 1/5 carat tw stack band J. Sapphire & Diamond 11-stone band K. 1/6 carat tw stack band L. 1/10 carat tw stack band M. 1/10 carat tw stack band N. 1/10 carat tw stack band P. Sapphire & Diamond band Q. 1/6 carat tw twisted band R. Emerald & Diamond channel-set band S. Emerald & Diamond 7-stone band



A



B



D



C



E



F

Happily Ever *after*



G



H



J



K



M



L



N



P



Q

CHEVRON BANDS

- A. 1/4 carat tw chevron band B. 1/6 carat tw chevron band C. 1/3 carat tw chevron band D. 1/4 carat tw chevron band
 E. 1/3 carat tw chevron band F. 1/3 carat tw chevron band G. 1/10 carat tw chevronband H. 1/8 carat tw chevron band
 J. 1/5 carat tw chevron band K. 1/10 carat tw chevron band L. 1/4 carat tw chevron band M. 1/6 carat tw chevron band
 N. 1/4 carat tw chevron band P. 1/4 carat twchevron band Q. 1/2 carat tw chevron band

Some styles available in different carat weights



Happy Wife - Happy Life

6679-E Edwardsville Crossing Dr. (Dierbergs Crossing)
Edwardsville, IL 62025
618.656.3188



SCAN ON YOUR SMART PHONE OR LOG ONTO
hudsonjewelers.com

COME SEE OUR COLLECTION OF LOOSE DIAMONDS



Round



Princess



Emerald



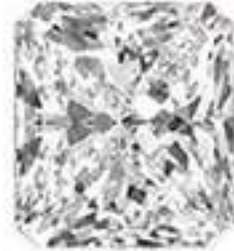
Asscher



Marquise



Oval



Radiant



Pear



Heart



Cushion



Nobody Does

It Do

Like We Do!



Happy Wife - Happy Life

**FAMILY OWNED
SINCE 1944**

Jewelry images shown may have been enlarged or retouched to show details. Prices shown may change without notice due to market conditions and fluctuations. Diamond carat total weight (ctw) represents the approximate carat total weight of all the diamonds set, unless noted. Diamond total weights may vary between 0.01 and 0.07 ct. All pendants priced with chains. Natural colored diamonds may have been treated or enhanced by heating or irradiation. Natural colored gemstones may have been treated or enhanced by heating, irradiation, oiling, filling, or diffusion. Photographic, typographical, and print errors are subject to correction. Some styles featured in the catalog may not be immediately available, but may be ordered.