

# TIMELESS VOWS



*O'Neal's Jewelers, Inc.*

*Since 1944*

[www.onealsjewelers.com](http://www.onealsjewelers.com)

Nobody Does "I DO" like we do!®



Golden *moments*



\*Center stone sold separately. Center stone range 1.50-3.00 ct. All styles available in various shapes



A. 1/5 carat tw semi-mount ring B. 3/4 carat tw semi-mount ring C. 3/4 carat tw semi-mount ring D. 3/4 carat tw semi-mount ring E. 1/3 carat tw semi-mount ring F. 3/4 carat tw semi-mount ring



A



C



B



D

Timeless *spark*



E



F

A. 3/4 carat tw semi-mount ring B. 7/8 carat tw semi-mount ring C. 5/8 carat tw semi-mount ring D. 1 1/10 carat tw semi-mount ring E. 1/2 carat tw semi-mount ring F. 3/8 carat tw semi-mount ring



A



B



D



C



E



F

\*Center stone sold separately. Center stone range 1.50-3.00 ct. All styles available in various shapes

  
**ASHI COUTURE**  
NEW YORK CITY

A. 7/8 carat tw semi-mount ring B. 3/8 carat tw semi-mount ring C. 3/4 carat tw semi-mount ring D. 1 1/6 carat tw semi-mount ring E. 1 1/3 carat tw semi-mount ring F. 5/8 carat tw semi-mount ring



A



C



B



D

Limitless *shine*



E



F

  
ASHI COUTURE  
NEW YORK CITY

\*Center stone range 1.50-3.00

A. 1/5 carat tw semi-mount ring B. 1/2 carat tw semi-mount ring C. 5/8 carat tw semi-mount ring D. 1/2 carat tw semi-mount ring E. 5/8 carat tw semi-mount ring F. 3/8 carat tw semi-mount ring



A



B



C



D



E



F

\*Center stone sold separately. Center stone range 1.00-5.00 ct. All styles available in various shapes



A. 1/3 carat tw semi-mount ring B. 1/10 carat tw semi-mount ring C. 1/4 carat tw semi-mount ring D. 1/2 carat tw semi-mount ring E. 1/6 carat tw semi-mount ring F. 1/20 carat tw semi-mount ring



A



B



C



D

Whispers of *love*



E



F

A. 1 carat tw semi-mount ring B. 1 1/10 carat tw semi-mount ring C. 1/2 carat tw semi-mount ring D. 1 carat tw semi-mount ring  
E. 1/2 carat tw semi-mount ring F. 1/10 carat tw semi-mount ring



A



B



C



E



D



F

\*Center stone sold separately. Center stone range 1.00-5.00 ct. All styles available in various shapes



A. 1/2 carat tw semi-mount ring B. 7/8 carat tw semi-mount ring C. 7/8 carat tw semi-mount ring D. 3/4 carat tw semi-mount ring E. 3/4 carat tw semi-mount ring F. 1/2 carat tw semi-mount ring



A



B



C



D



E

A. 5/8 carat tw semi-mount ring B. 7/8 carat tw semi-mount ring C. 1 1/6 carat tw semi-mount ring D. 7/8 carat tw semi-mount ring E. 1 carat tw semi-mount ring



A



B



C



D

Crowning *love*



E



F

\*Center stone sold separately. Center stone range 0.85-2.50 ct.

A. 1 1/2 carat tw semi-mount ring B. 1 1/5 carat tw semi-mount ring C. 1 3/4 carat tw semi-mount ring D. 2 1/6 carat tw semi-mount ring E. 2 1/10 carat tw semi-mount ring F. 1 1/2 carat tw semi-mount ring



A



B



C



D



E



F

A. 5/8 carat tw semi-mount ring B. 5/8 carat tw semi-mount ring C. 1/3 carat tw semi-mount ring D. 1/2 carat tw semi-mount ring E. 1/2 carat tw semi-mount ring F. 3/8 carat tw semi-mount ring



A



B

Aura of *forever*



C



D



E

\*Center stone sold separately. Center stone range 0.85-1.50 ct.

A. 1/4 carat tw semi-mount ring B. 3/8 carat tw semi-mount ring C. 5/8 carat tw semi-mount ring D. 3/4 carat tw semi-mount ring E. 1 1/10 carat tw semi-mount ring



A



B



C



D



E

Inspired *beauty*



F



G



H

A. 1/2 carat tw semi-mount ring B. 1/2 carat tw semi-mount ring C. 1/2 carat tw semi-mount ring D. 3/4 carat tw semi-mount ring E. 5/8 carat tw semi-mount ring F. 3/8 carat tw semi-mount ring G. 3/8 carat tw semi-mount ring H. 1/4 carat tw semi-mount ring



A



C



B



D



F



E



G



H

\*Center stone sold separately. Center stone range 0.60-1.75 ct.

A. 1/3 carat tw semi-mount ring B. 1/4 carat tw semi-mount ring C. 1/3 carat tw semi-mount ring D. 1/5 carat tw semi-mount ring E. 1/10 carat tw semi-mount ring F. 1/20 carat tw semi-mount ring G. 1/20 carat tw semi-mount ring H. 1/20 carat tw semi-mount ring



A



B



C



D



E



G



F



H

A. 1/2 carat tw ring (1/3 carat oval center) B. 1/2 carat tw ring (1/3 carat emerald center) C. 1/2 carat tw ring (1/3 carat emerald center) D. 1/2 carat tw ring (1/3 carat pear center) E. 1/2 carat tw ring (1/3 carat oval center) F. 7/8 carat tw ring (1/2 carat emerald center) G. 1/2 carat tw ring (1/3 carat oval center) H. 1/2 carat tw ring (1/4 carat round center)



Sophistication *redefined*



Engagement ring includes center stone



A. 3/4 carat tw ring (3/8 carat pear center) B. 1/2 carat tw ring (1/4 carat oval center) C. 1/2 carat tw ring (1/4 carat emerald center) D. 1/2 carat tw ring (1/4 carat marquise center) E. 3/8 carat tw ring (1/4 carat emerald center) F. 3/8 carat tw ring (1/4 carat oval center) G. 1/2 carat tw ring (1/3 carat oval center) H. 1/2 carat tw ring (1/3 carat round center)



A



B



C



D



E



F

Celebrate *forever*



G



H

A. 3/8 carat tw ring (1/3 carat emerald center) B. 1/2 carat tw ring (1/3 carat pear center) C. 1/2 carat tw ring (1/3 carat oval center) D. 7/8 carat tw ring (1/2 carat oval center) E. 7/8 carat tw ring (1/2 carat emerald center) F. 1/2 carat tw ring (1/3 carat round center) G. 1/3 carat tw ring (1/4 carat round center) H. 5/8 carat tw ring (3/8 carat round center)



A



B



C



D



E



F



G

Engagement ring includes center stone



A. 1 carat tw ring (1/2 carat pear center) B. 5/8 carat tw ring (1/4 carat emerald center) C. 1 carat tw ring (3/8 carat oval center) D. 3/8 carat tw ring (1/3 carat round center) E. 1/2 carat tw ring (1/3 carat pear center) F. 1/2 carat tw ring (1/3 carat emerald center) G. 1/2 carat tw ring (1/3 carat oval center)



A



B



C



D



E



F

A. 1/2 carat tw ring B. 1/2 carat tw ring C. 3/4 carat tw ring D. 7/8 carat tw ring E. 1/3 carat tw ring F. 1/2 carat tw ring



Shines *bright*



Some styles available in different carat weights



A. 1/2 carat tw ring B. 1/2 carat tw ring C. 1/2 carat tw ring D. 1/2 carat tw ring E. 1/2 carat tw ring F. 1/2 carat tw ring



A



B



C



D



E



F

A. 1/2 carat tw ring B. 3/4 carat tw ring C. 3/8 carat tw ring D. 5/8 carat tw ring E. 1/2 carat tw ring F. 1/3 carat tw ring



A



B



C



D

Glow with *love*



E



F

Some styles available in different carat weights



A. 1/2 carat tw ring B. 3/4 carat tw ring C. 5/8 carat tw ring D. 3/4 carat tw ring E. 1/2 carat tw ring F. 1/3 carat tw ring



A



B



C



E



D



F

A. 5/8 carat tw ring    B. 1/2 carat tw ring    C. 1/2 carat tw ring    D. 1/2 carat tw ring    E. 5/8 carat tw ring  
F. 1/2 carat tw ring



A



B



C

Fusion of *elegance*



D



E



F

Some styles available in different carat weights

  
FUSION DIAMONDS

A. 7/8 carat tw ring B. 1/2 carat tw ring C. 3/4 carat tw ring D. 5/8 carat tw ring E. 3/8 carat tw ring F. 1 carat tw ring



A



B



C



C' WITH ENGAGEMENT RING



D



E

A. 1/2 carat tw insert B. 1/3 carat tw insert C. 1/2 carat tw insert D. 3/8 carat tw insert E. 1/3 carat tw insert



A



B



C



C† WITH ENGAGEMENT RING



Perfect *match*



D



E

† Engagement ring sold separately

INSERTS

A. 1/2 carat tw insert B. 1/3 carat tw insert C. 1/4 carat tw insert D. 5/8 carat tw insert E. 5/8 carat tw insert



Elegance *elevated*

A. 1/3 carat tw insert B. 3/4 carat tw insert C. 3/4 carat tw insert D. 1/2 carat tw insert E. 1/2 carat tw insert



A



B



C



D



E



F



G



G† WITH ENGAGEMENT RING

† Engagement ring sold separately

## INSERTS

A. Sapphire & diamond insert   B. Emerald & diamond insert   C. Sapphire & diamond insert   D. Sapphire & diamond insert  
 E. Sapphire & diamond insert   F. Sapphire & diamond insert   G. Ruby & diamond insert



A



B



D



C



E



G



F

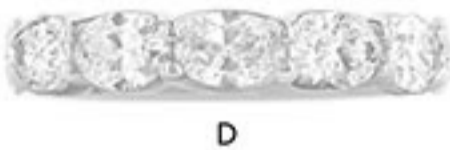
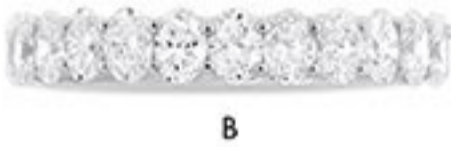


H

A. 1 carat tw channel-set eternity band B. 1 carat tw milgrain eternity band C. 1 carat tw fishtail-set eternity band D. 1 carat tw prong-set eternity band E. 1/2 carat tw twisted eternity band F. 1 carat tw prong-set eternity band G. 1 carat tw eternity band H. 5/8 carat tw eternity band



Aisle to *eternity*



Some styles available in different carat weights

ETERNITY BANDS

A. 2 carat tw marquise eternity band B. 2 1/4 carat tw oval eternity band C. 3 carat tw emerald eternity band D. 3 3/4 carat tw oval eternity band E. 2 1/10 carat tw emerald eternity band F. 2 1/10 carat tw oval eternity band G. 5/8 carat tw marquise eternity band



A



B



C



D



E

A. 1 carat tw emerald ribbed band B. 1 1/2 carat tw band C. 1 1/2 carat tw 3-row band D. 1 1/2 carat tw 3-row band  
E. 1 1/2 carat tw 3-row band



A



B

Power of *bold*



C

D



E

F

BOLD BANDS

A. 3/4 carat tw mixed shape band B. 3 1/3 carat tw hexagon band C. 5/8 carat tw 4-stone mixed ape band D. 7/8 carat tw 5-stone mixed shape band E. 5/8 carat tw 4-stone mixed shape band F. 5/8 carat tw 4-stone band



A



B



C



D

Powerful *statement*



E



F



G



H

A. 1 1/6 carat tw mixed shape band B. 1 1/2 carat tw baguette band C. 1 5/8 carat tw baguette band D. 1 1/4 carat tw cross over band E. 2 carat tw 2-row band F. 1 1/5 carat tw 2-row band G. 1 carat tw 5-stone emerald band H. 1 carat tw 5-stone oval band



A



B



C



D



E



F



## BOLD BANDS

A. 1/2 carat tw emerald ribbed band B. 3/4 carat tw pear 2-row band C. 5/8 carat tw pear bold band D. 1 1/5 carat tw 5-stone band E. 5/8 carat tw clover band F. 1 1/6 carat tw cocktail band



A



B

Beyond *ordinary*



C



D



E



F



G

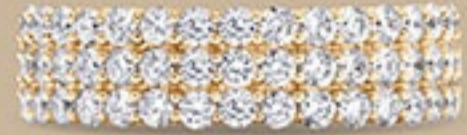
A. 1 carat tw 5-stone band B. 1 carat tw 7-stone band C. 1 carat tw milgrain band D. 1 carat tw channel-set band  
E. 1 carat tw 11-stone band F. 1/2 carat tw pave-set band G. 1 carat tw prong-set band



A



B



C



D



F



E



G



H

Some styles available in different carat weights

## CLASSIC BANDS

A. 1 carat tw 5-stone band B. 2 carat tw 2-row band C. 1 1/4 carat tw 3-row band D. Sapphire & diamond prong-set band E. Emerald & diamond band F. Emerald & diamond 11-stone band G. Sapphire & diamond channel-set band H. Ruby & diamond 7-stone band



A



B



C



D



E

Fancy *forever*



F



G



H

A. 3/4 carat tw emerald band B. 5/8 carat tw zig-zag band C. 1/3 carat tw marquise band D. 1/3 carat tw oval band  
E. 1/3 carat tw emerald band F. 1/3 carat tw pear band G. 3/8 carat tw pear band H. 1/2 carat tw baguette band



A



B



C



D



E



F



G



## FANCY BANDS

A. 3/8 carat tw mixed shape band B. 3/8 carat tw mixed shape band C. 3/8 carat tw baguette band D. 1/2 carat tw flush bezel set mixed shape band E. 1/3 carat tw mixed shape band F. 1/2 carat tw mixed shape band G. 1/3 carat tw Toi et Moi band



A



B



C



D



E



F

Distinctly *divine*



G



H



J

A. 3/4 carat tw emerald band B. 5/8 carat tw mixed shape band C. 1 1/10 carat tw mixed shape band D. 1 carat tw pear band E. 1 carat tw oval band F. 1 carat tw emerald band G. 3/8 carat tw oval band H. 3/8 carat tw pear band J. 3/8 carat tw marquise ring



A



C



B



D



E



F



G



H

Some styles available in different carat weights

## FANCY BANDS

A. 1 1/2 carat tw 5-stone emerald band B. 1 1/2 carat tw 5-stone oval band C. 1 carat tw 7-stone emerald band D. 1 carat tw 7-stone oval band E. 3/4 carat tw 7-stone marquise band F. 3/4 carat tw 7-stone oval band G. 3/4 carat tw 7-stone pear band H. 3/4 carat tw emerald 7-stone band



A



B



G



C



H



D



J



E



F

Layers of *love*



K



M



L



N

A. 1/10 carat tw stack band B. 1/10 carat tw stack band C. 1/6 carat tw stack band D. 1/10 carat tw stack band  
E. 1/10 carat tw stack band F. 1/4 carat tw stack band G. 1/10 carat tw stack band H. 1/10 carat tw stack band  
J. 1/3 carat tw baguette stack band K. 1/5 carat tw bamboo stack band L. 1/4 carat tw stack band M. 1/6 carat tw twisted  
stack band N. 1/10 carat tw stack band



A



B



C



D



E



F



G



H



K



J



L

## STACK BANDS

A. 1/3 carat tw baguette stack band B. 1/2 carat tw baguette stack band C. 1/2 carat tw crossover band D. 1/10 carat tw open link band E. 1/5 carat tw open link band F. 1/10 carat tw braid band G. 1/4 carat tw twist band H. 1/5 carat tw open band J. 1/20 carat tw marquise band K. 1/5 carat tw 2-row band L. 1/5 carat tw hexagon band



A



B



C



D



D1 WITH ENGAGEMENT RING



E



F



G



H



J



A. 1/3 carat tw band B. 1/3 carat tw band C. 1/2 carat tw band D. 1/3 carat tw band E. 1/10 carat tw band F. 1/4 carat tw band G. 1/10 carat tw band H. 1/8 carat tw band J. 1/6 carat tw band



C



D



H



J



B



A



A† WITH ENGAGEMENT RING

# Modern *elegance*



E



G

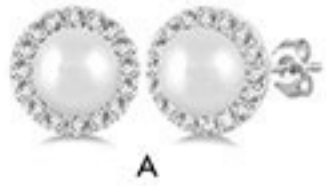


F

† Engagement ring sold separately

## CHEVRON BANDS

A. 1/5 carat tw band B. 1/4 carat tw band C. 1/4 carat tw band D. 1/4 carat tw band E. 7/8 carat tw mixed shape band F. 3/4 carat tw mixed shape band G. 3/8 carat tw band H. 1/5 carat tw band J. 1/4 carat tw band



A. Pearl and diamond earrings B. Pearl and diamond pendant C. Pearl and diamond earrings D. 1/4 carat tw marquise necklace E. 1/5 carat tw heart necklace F. 1/6 carat tw floral earrings G. 1/5 carat tw pendant H. 1/8 carat tw pendant



A\*



B\*



C



D\*



E



F



G\*

*shining*  
BY  
HER SIDE

\*Denotes 10kt Gold

BRIDESMAID

A. 1/3 carat tw heart pendant B. 1/8 carat tw pendant C. 1/6 carat tw pendant D. 1/10 carat tw huggie earrings E. 1/4 carat tw cross pendant F. 1/4 carat tw smile necklace G. 1/10 carat tw heart earrings



A



B\*



C



D



E

BONDED IN  
*beauty*



F\*



G\*

A. 1/3 carat tw earring climbers B. 1/20 carat tw fluted heart pendant C. 1/4 carat tw heart pendant D. 1/4 carat tw circle pendant E. 1/6 carat tw cross pendant F. 1/10 carat tw round pendant G. 1/10 carat tw earring climbers



A



B



C\*



D



E



F



G



H



\*Denotes 10kt Gold

## MOTHER AND DAUGHTER

A. 1/6 carat tw paper clip earrings B. 1/4 carat tw hexagon necklace C. 1/8 carat tw huggie earrings D. 1/6 carat tw cone shape earrings E. 1/4 carat tw 3 stone pendant F. Ruby & diamond necklace G. 1/4 carat tw station necklace H. Sapphire paper clip pendant

# CUT

The exquisite beauty of a diamond's radiance depends on the artistry of cutting. Within this craft, three essential elements come together: proportion, symmetry, and polish. While nature bestows diamonds with their characteristics, it's the hands of a master cutter that elevate them to unparalleled brilliance and luster.

When a diamond undergoes precise cutting, achieving the perfect balance between depth and surface, it transforms into a canvas for the most enchanting play of light. Light dances gracefully within its facets, creating a resplendent spectacle of colors and radiance, a sight that truly befits the realm of luxury and opulence.



# COLOR

Celebrated for their unparalleled transparency, diamonds, despite their brilliance, often reveal subtle hints of color. It's this delicate interplay of color that lends each diamond its unique character. To discern and appreciate these nuances, the world of diamonds employs a standardized color grading system that has been internationally embraced since the 1950s, ranging from the letter D to Z.

GIA COLOR CODE

D	E	F	G	H	I	J	K	L	M	N	O	P	Q	R	S	T	U	V	W	X	Y	Z	
Colorless			Near Colorless				Faint Yellow		Very Light Yellow				Light Yellow										

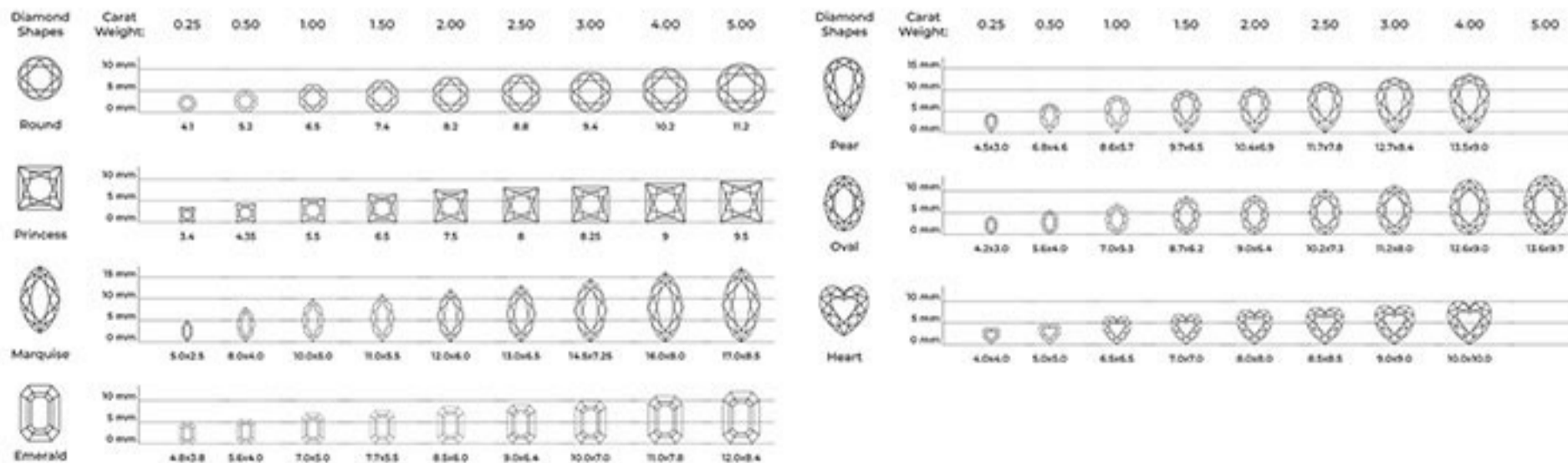
# CLARITY

Nearly all diamonds possess subtle internal and surface features, with most being too minuscule to detect without magnification. When examined under 10X magnification, these characteristics can manifest as tiny crystals, wispy clouds, or delicate feathers. The assessment of a diamond's clarity grade involves a comprehensive evaluation of factors such as their dimensions, placement, abundance, and type.

GRADE	FL	IF	VVS1, VVS2	VS1, VS2	S11, S12, S13	I1, I2, I3
CATEGORY	FLAWLESS	INTERNALLY FLAWLESS	VERY VERY SLIGHTLY INCLUDED	VERY SLIGHTLY INCLUDED	SLIGHTLY INCLUDED	INCLUDED

# CARAT

In the world of exquisite diamonds, the measurement of size goes beyond mere weight; it's a symphony of craftsmanship and rarity. Carats, the units by which we gauge a diamond's size, are intricately divided into points, with one carat equating to 100 points or a fifth of a gram. While it's true that diamonds of higher carat weights are often cherished for their scarcity, weight alone barely scratches the surface of a diamond's true worth.



Jewelry images shown may have been enlarged or retouched to show details. Prices shown may change without notice due to market conditions and fluctuations. Diamond carat total weight (ctw) represents the approximate carat total weight of all the diamonds set, unless noted. Diamond total weights may vary between 0.01 and 0.07 ct. All pendants priced with chains. Natural colored diamonds may have been treated or enhanced by heating or irradiation. Natural colored gemstones may have been treated or enhanced by heating, irradiation, oiling, filling, or diffusion. Photographic, typographical, and print errors are subject to correction. Some styles featured in the catalog may not be immediately available, but may be ordered.



*O'Neal's Jewelers, Inc.*

*Since 1944*

106 West Paul Ave. Pauls Valley, OK 73075

(405) 238-2310

[www.onealsjewelers.com](http://www.onealsjewelers.com)