

# BRIDAL

Collection



**JAY'S JEWELRY**

*House of Diamonds*

[www.jaysjewelry.com](http://www.jaysjewelry.com)



Crowned *forever*



D



F



E



G

A. 5/8 carat tw semi-mount ring B. 5/8 carat tw semi-mount ring C. 1/5 carat tw semi-mount ring D. 1 1/6 carat tw semi-mount ring E. 7/8 carat tw semi-mount ring F. 3/4 carat tw semi-mount ring G. 3/4 carat tw semi-mount ring



A



B



C



D



E



F

\*Center stone sold separately. Center stone range 1.50-3.00 ct. All styles available in various shapes



ASHI COUTURE  
NEW YORK CITY

A. 7/8 carat tw semi-mount ring B. 5/8 carat tw semi-mount ring C. 3/8 carat tw semi-mount ring D. 3/4 carat tw semi-mount ring E. 5/8 carat tw semi-mount ring F. 3/4 carat tw semi-mount ring



A. 1/2 carat tw semi-mount ring B. 3/4 carat tw semi-mount ring C. 1 1/3 carat tw semi-mount ring D. 1/3 carat tw semi-mount ring E. 3/4 carat tw semi-mount ring



Crafted for *forever*



\*Center stone sold separately. Center stone range 1.50-3.00 ct. All styles available in various shapes

A. 3/4 carat tw semi-mount ring B. 3/8 carat tw semi-mount ring C. 1 1/10 carat tw semi-mount ring D. 1/2 carat tw semi-mount ring E. 1/5 carat tw semi-mount ring F. 3/8 carat tw semi-mount ring



A. 1/6 carat tw semi-mount ring B. 1/20 carat tw semi-mount ring C. 1/4 carat tw semi-mount ring D. 1/10 carat tw semi-mount ring E. 1/20 carat tw semi-mount ring F. 1/4 carat tw semi-mount ring G. 1/2 carat tw semi-mount ring



Love brilliant

\*Center stone sold separately. Center stone range 1.00-5.00 ct. All styles available in various shapes



A. 1/10 carat tw semi-mount ring B. 1/10 carat tw semi-mount ring C. 1/10 carat tw semi-mount ring D. 1/3 carat tw semi-mount ring E. 1/10 carat tw semi-mount ring F. 1/20 carat tw semi-mount ring



A



B



C



D

More than a *ring*



E

A. 1 1/10 carat tw semi-mount ring B. 1/2 carat tw semi-mount ring C. 7/8 carat tw semi-mount ring D. 3/4 carat tw semi-mount ring E. 1/2 carat tw semi-mount ring



\*Center stone sold separately. Center stone range 1.00-5.00 ct. All styles available in various shapes



A. 1/10 carat tw semi-mount ring B. 1/2 carat tw semi-mount ring C. 7/8 carat tw semi-mount ring D. 1/2 carat tw semi-mount ring E. 1 carat tw semi-mount ring



A. 3/8 carat tw semi-mount ring B. 3/4 carat tw semi-mount ring C. 1 1/6 carat tw semi-mount ring D. 1/10 carat tw semi-mount ring E. 5/8 carat tw semi-mount ring F. 7/8 carat tw semi-mount ring



A



B

Timeless *spark*



C



D



E

\*Center stone sold separately. Center stone range 0.85-2.00 ct.

A. 1/10 carat tw semi-mount ring B. 1/4 carat tw semi-mount ring C. 1 1/2 carat tw semi-mount ring D. 7/8 carat tw semi-mount ring E. 2 1/10 carat tw semi-mount ring



A



B



C

Sophistication *refined*



D

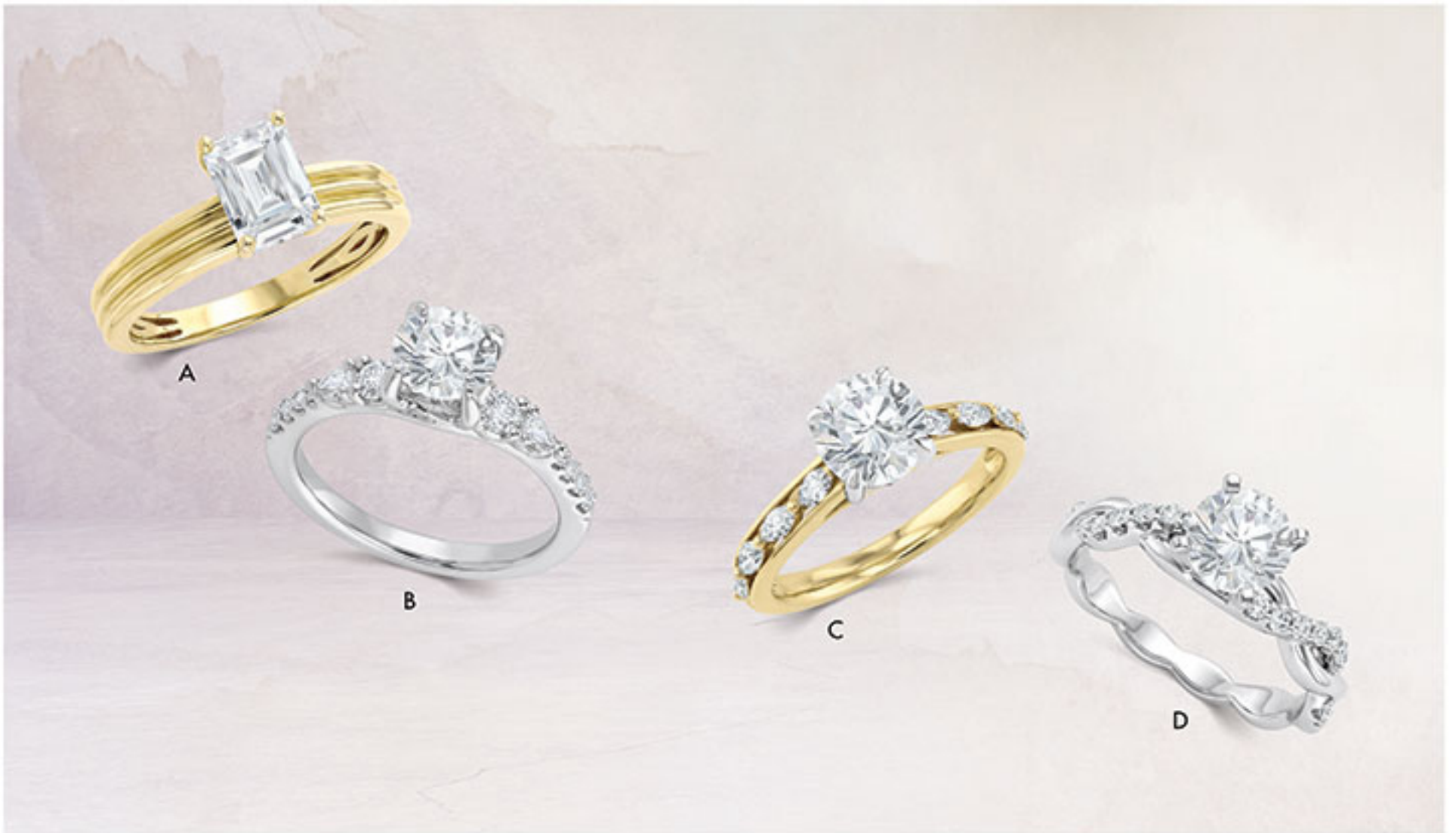


E



F

A. 5/8 carat tw semi-mount ring B. 1/20 carat tw semi-mount ring C. 5/8 carat tw semi-mount ring D. 1/3 carat tw semi-mount ring E. 1 1/5 carat tw semi-mount ring F. 1 3/4 carat tw semi-mount ring



\*Center stone sold separately. Center stone range 0.85-2.50 ct.

A. 1/20 carat tw semi-mount ring B. 1/2 carat tw semi-mount ring C. 1/2 carat tw semi-mount ring D. 1/5 carat tw semi-mount ring E. 1 1/3 carat tw semi-mount ring F. 1 1/10 carat tw semi-mount ring G. 7/8 carat tw semi-mount ring



A. 3/4 carat tw 3-stone ring (3/8 carat round center) B. 1/2 carat tw ring (1/3 carat oval center) C. 1/2 carat tw ring (1/3 carat oval center) D. 3/8 carat tw ring (1/3 carat emerald center) E. 1/2 carat tw ring (1/4 carat emerald center) F. 1/3 carat tw ring (1/4 carat round center) G. 1 carat tw ring (1/2 carat emerald center) H. 1 carat tw ring (3/8 carat oval center)



Perfectly *matched*

Engagement ring includes center stone



A. 3/8 carat tw ring (1/4 carat oval center) B. 1/2 carat tw ring (1/3 carat pear center) C. 7/8 carat tw ring (1/2 carat oval center) D. 3/4 carat tw 3-stone ring (1/2 carat round center) E. 1 carat tw 3-stone ring (1/2 carat oval center) F. 1/2 carat tw ring (1/4 carat round center) G. Sapphire & diamond ring (1/2 carat round center) H. 3/8 carat tw ring (1/3 carat emerald center)



A



B



C

Brilliance *structured*



D



E



F

A. 1/2 carat tw ring B. 1/2 carat tw ring C. 5/8 carat tw ring D. 1/2 carat tw ring \$2,250 E. 1/2 carat tw ring \$2,095 F. 5/8 carat tw ring



Some styles available in different carat weights

  
LOVEBRIGHT

A. 1/2 carat tw ring \$1,595 B. 1/2 carat tw ring \$2,195 C. 1/3 carat tw ring \$1,995 D. 1/2 carat tw ring \$2,450 E. 3/8 carat tw ring \$1,795 F. 1/2 carat tw ring \$3,395



A

B



C



D



E

A. 3/4 carat tw ring B. 1 1/10 carat tw ring C. 5/8 carat tw ring D. 1/2 carat tw ring E. 3/4 carat tw ring



A



B



C



D



E



F

Beyond *ordinary*

Some styles available in different carat weights

 LOVEBRIGHT

A. 1 carat tw ring B. 1/3 carat tw ring C. 1/3 carat tw ring D. 1/2 carat tw ring E. 1/2 carat tw ring F. 3/4 carat tw ring



A



B

Fusion of *elegance*



C



D



E



F

A. 3/4 carat tw ring B. 1/2 carat tw ring C. 3/4 carat tw ring D. 1 carat tw ring E. 1/2 carat tw ring F. 5/8 carat tw ring

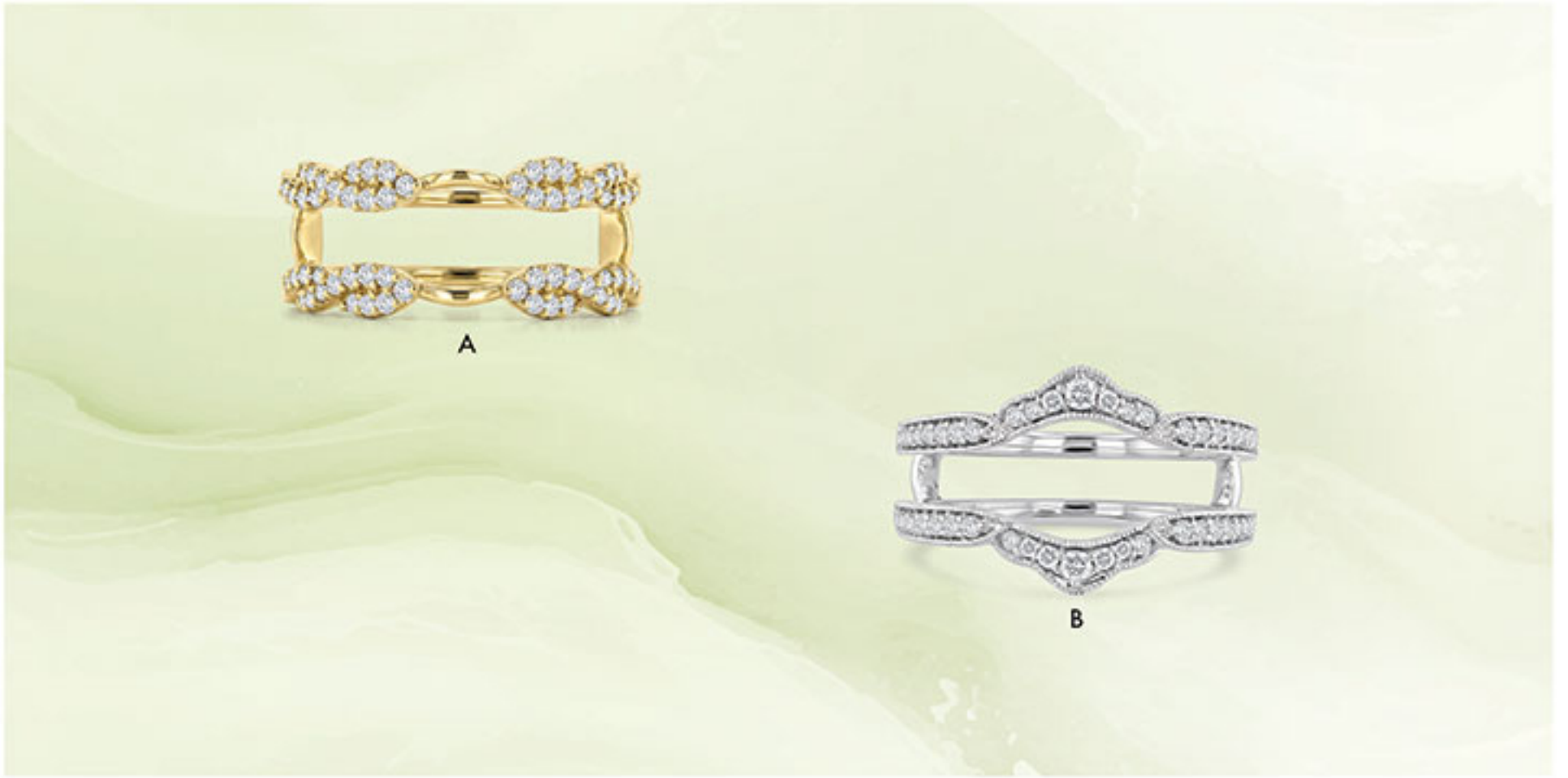


Some styles available in different carat weights

A. 1/2 carat tw ring B. 1/3 carat tw ring C. 7/8 carat tw ring D. 5/8 carat tw ring E. 5/8 carat tw ring F. 1/2 carat tw ring



FUSION DIAMONDS



A. 3/8 carat tw insert B. 1/3 carat tw insert C. 1/3 carat tw insert D. 1/2 carat tw insert E. 1/2 carat tw insert F. 3/8 carat tw insert



A



B

Aura of *forever*



C



C† WITH ENGAGEMENT RING



D



E

†Engagement ring sold separately

INSERTS

A. 1/3 carat tw insert B. 1 carat tw insert C. 1/4 carat tw insert D. 1/2 carat tw insert E. 1 1/10 carat tw insert



A



B



C

Elegance *elevated*



D



D† WITH ENGAGEMENT RING



G



E



F

A. 3/8 carat tw insert B. 2 carat tw insert C. 5/8 carat tw insert D. 1/2 carat tw insert E. Emerald & diamond insert F. Sapphire & diamond insert G. Sapphire & diamond insert



†Engagement ring sold separately

INSERTS

A. 3/4 carat tw insert   B. 3/4 carat tw insert   C. 3/4 carat tw insert   D. 1/2 carat tw insert   E. 1/3 carat tw insert  
 F. 1/2 carat tw insert



A. 1/2 carat tw milgrain band B. Emerald & diamond 11-stone band C. 1/2 carat tw channel-set band D. 1/2 carat tw 7-stone band E. Sapphire & diamond channel-set band F. 1/2 carat tw 11-stone band G. Sapphire & diamond 11-stone band H. 1/2 carat tw pave-set band J. Ruby & diamond 7-stone band



A



B



C

Whispered *love*



D

E



F

G

Some styles available in different carat weights

CLASSIC BANDS

A. 1/2 carat tw channel set curved band B. 1/2 carat tw milgrain curved band C. 1/2 carat tw prong set curved band D. 1/2 carat tw 7-stone princess band E. 1/2 carat tw channel-set princess band F. 1/2 carat tw prong-set band G. 1/2 carat tw 5-stone band



Gracefully *yours*



A. 3/4 carat tw 7-stone emerald band B. 3/4 carat tw 7-stone emerald band C. 3/4 carat tw 7-stone pear band D. 3/4 carat tw 7-stone pear band E. 1 carat tw oval band F. 1 carat tw emerald band G. 1 carat tw pear band H. 3/4 carat tw 7-stone marquise band J. 3/4 carat tw 7-stone oval band



Some styles available in different carat weights

## CLASSIC BANDS

A. Sapphire & diamond 7-stone band B. Emerald & diamond 7-stone band C. 1 carat tw 7-stone emerald band D. 1 carat tw 7-stone oval band E. Ruby & diamond 7-stone band F. Sapphire & diamond 7-stone band G. 1 1/2 carat tw 5-stone emerald band H. 1 1/2 carat tw 5-stone oval band



A. 1/2 carat tw hexa eternity band B. 5/8 carat tw marquise eternity band C. 1/2 carat tw twisted eternity band D. 1 carat tw channel-set eternity band E. 1/4 carat tw eternity band F. 1 carat tw prong-set eternity band G. 1 carat tw milgrain eternity band H. 1 carat tw fishtail-set eternity band J. 1 carat tw eternity band K. 5/8 carat tw eternity band L. 1 carat tw prong-set eternity band



Simply *forever*

Some styles available in different carat weights

ETERNITY BANDS

A. 2 1/4 carat tw oval eternity band B. 3 carat tw emerald eternity band C. 3 3/4 carat tw oval eternity band D. 2 carat tw marquise eternity band E. 2 1/10 carat tw emerald eternity band F. 2 1/10 carat tw oval eternity band



A



C



B

## Golden *moments*



D



E



F

A. 1 1/4 carat tw mixed shape open bold band B. 1 1/2 carat tw mixed shape open bold band C. 1 1/5 carat tw mixed shape open bold band D. 1/2 carat tw v-shaped bold band E. 1 1/2 carat tw mixed shape open bold band F. 3/4 carat tw mixed shape open bold band



**BOLD BANDS**

A. 3 1/3 carat tw dome band B. 1 1/6 carat tw 3-row wide band C. 1 3/4 carat tw bold band D. 3 1/3 carat tw hexagon dome band E. 1 carat tw baguette band



A. 5/8 carat tw pear bold band B. 1 1/4 carat tw mixed shape open bold band C. 3/4 carat tw mixed shape bold band  
 D. 1 1/6 carat tw mixed shape band E. 7/8 carat tw 5-stone mixed shape band F. 5/8 carat tw floral mixed shape bold band



Power of *bold*



## BOLD BANDS

A. 2 carat tw baguette bold band   B. 2 carat tw 2-row emerald band   C. 1 1/10 carat tw grid baguette bold band  
D. 1 carat tw baguette band   E. 1 1/2 carat tw baguette bold band   F. 3 carat tw 3-row emerald band



A



B

Designed to *dazzle*



C



D



E

F

A. 3/4 carat tw mixed shape bold band B. 3/4 carat tw mixed shape bold band C. 3/4 carat tw mixed shape bold band D. 1/2 carat tw mixed shape bold band E. 5/8 carat tw 4-stone oval bold band F. 5/8 carat tw 4-stone emerald bold band



## BOLD BANDS

A. 1 5/8 carat tw baguette band B. 1 1/2 carat tw baguette band C. 1 1/2 carat tw 3-row mixed shape band D. 1 1/2 carat tw 3-row band E. 1/2 carat tw marquise shape bezel open ring



A. 3/4 carat tw 3-row band B. 2 carat tw 2-row band C. 3/4 carat tw emerald band D. 1 carat tw 5-stone emerald band  
 E. 1 carat tw 5-stone oval band F. 5/8 carat tw zig-zag band



Timelessly *yours*



## FANCY BANDS

A. 1/2 carat tw 5-stone mixed shape band B. 1/3 carat tw toi et moi band C. 3/8 carat tw pear band D. 1/3 carat tw pear band E. 1 1/4 carat tw cross over band F. 5/8 carat tw zig-zag band G. 3/4 carat tw mixed shape band



Celebrate *forever*



A. 3/8 carat tw mixed shape band B. 1/6 carat tw geometric baguette band C. 3/8 carat tw mixed shape band D. 5/8 carat tw clover bold band E. 1 1/5 carat tw 5-stone band F. 1 1/2 carat tw bold band



## FANCY BANDS

A. 1/4 carat tw mixed shape band B. 1/2 carat tw mixed shape band C. 1/2 carat tw mixed shape band D. 1/3 carat tw mixed shape band E. 1/6 carat tw mixed shape band



A. 1 1/10 carat tw mixed shape band B. 1/3 carat tw 3-row scatter band C. 1 1/5 carat tw 2-row baguette band D. 1/2 carat tw mixed shape band E. 3/8 carat tw criss cross baguette band



A



B



C



D

Forever *yours*



E



F



G

## FANCY BANDS

A. 1 carat tw 3-stone oval band B. 1 carat tw 5-stone oval band C. 1 carat tw 7-stone oval band D. 1 carat tw 3-row scatter band E. 5/8 carat tw mixed shape band F. 1 carat tw mixed shape band G. 3/4 carat tw 5-stone emerald band



Glow with *love*

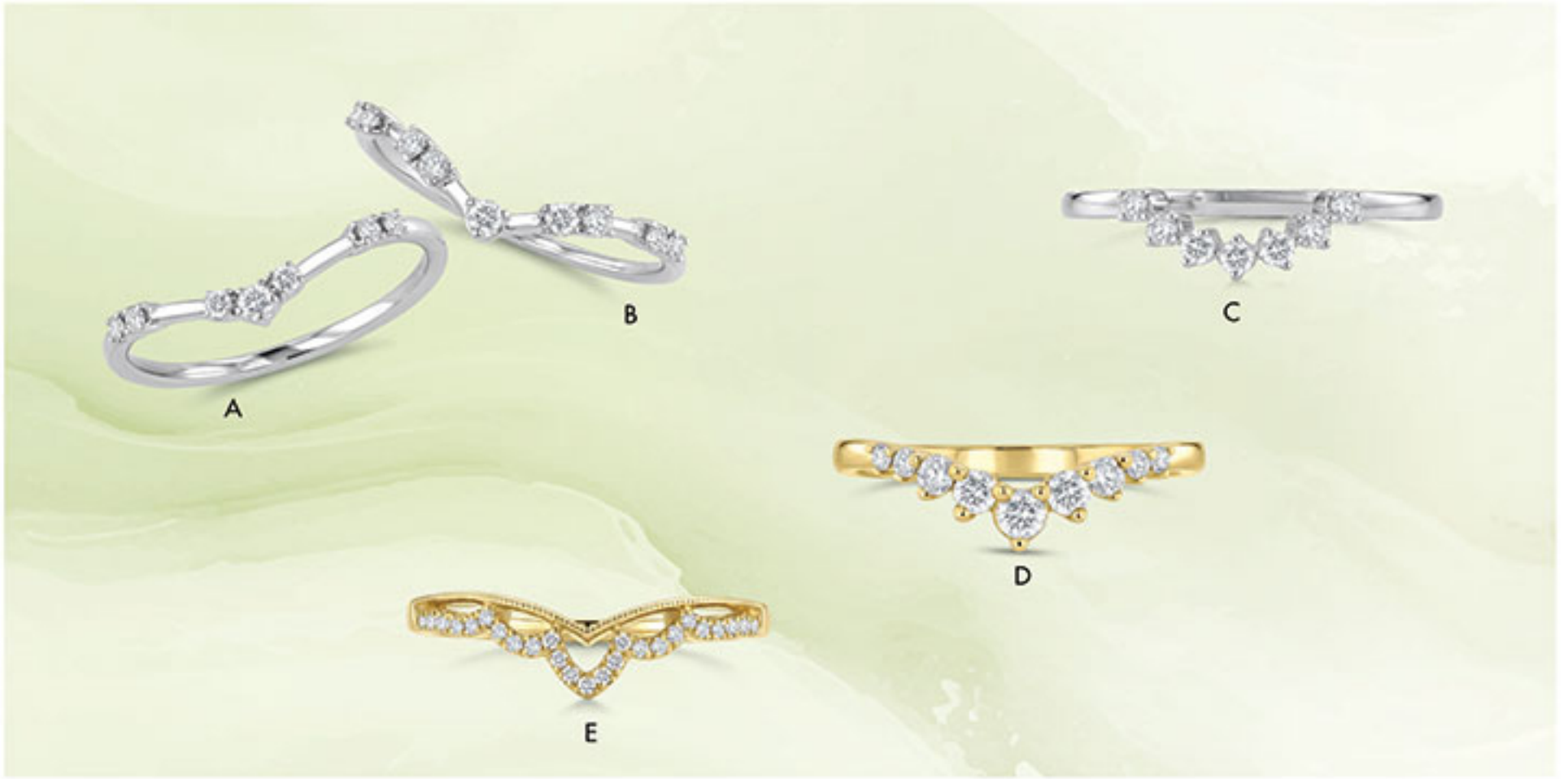


A. 1/20 carat tw open link stack band B. 1/20 carat tw geometric stack band C. 1/10 carat tw stack band D. 1/4 carat tw stack band E. 1/5 carat tw stack band F. 1/5 carat tw floating stack band G. 1/5 carat tw stack band H. 1/3 carat tw 2-row band J. 1/5 carat tw open band K. 1/10 carat tw stack band L. 1/2 carat tw 3-row band M. 1/10 carat tw stack band



## STACK BANDS

A. 1/10 carat tw stack band B. 1/3 carat tw baguette stack band C. 1/4 carat tw twist stack band D. 1/6 carat tw stack band E. 1/6 carat tw baguette stack band F. 1/6 carat tw twisted stack band G. 1/3 carat tw baguette stack band H. 1/10 carat tw baguette stack band



A. 1/10 carat tw chevron band B. 1/5 carat tw chevron band C. 1/6 carat tw chevron band D. 1/3 carat tw chevron band  
 E. 1/8 carat tw chevron band F. 1/5 carat tw chevron band G. 1/10 carat tw chevron band H. 1/4 carat tw chevron band  
 J. 1/8 carat tw chevron band K. 1/5 carat tw chevron bezel band



A



B



C



D



E

Powerful *statement*



F



G



J



H

## CHEVRON BANDS

A. 1/5 carat tw chevron baguette band B. 1/4 carat tw chevron baguette band C. 1/3 carat tw chevron mixed shape band D. 1/5 carat tw chevron marquise band E. 1/4 carat tw chevron band F. 7/8 carat tw mixed shape chevron band G. 3/8 carat tw chevron band H. 3/4 carat tw mixed shape chevron band J. 1/4 carat tw chevron band



Endless *promise*



PROMISE RINGS

A. 3/8 carat tw marquise hexa shank ring B. 1/5 carat tw oval hexa shank ring C. 1/2 carat tw emerald band D. 1/2 carat tw oval band E. 1/2 carat tw round band F. 1/2 carat tw marquise band G. 1/6 carat tw marquise band H. 1/6 carat tw emerald band J. 1/6 carat tw oval band K. 3/8 carat tw oval open ring L. 3/8 carat tw marquise open ring M. 1/3 carat tw marquise band N. 1/3 carat tw emerald band P. 1/3 carat tw oval band Q. 1/5 carat tw oval band R. 1/5 carat tw emerald band S. 1/5 carat tw round band



\* Denotes 10kt Gold

## MOTHER & DAUGHTER

A. 1/20 carat tw blossom pendant B. 1/6 carat tw blossom earrings C. Sapphire & diamond pendant D. Sapphire & diamond earrings E. Blue topaz & diamond pendant F. 1/6 carat tw circle interlock pendant G. 1/6 carat tw bezel pendant H. Amethyst & diamond pendant J. Pearl & diamond pendant K. Pearl & diamond station chain bracelet L. Pearl & diamond earrings M. 1/3 carat tw 3-stone earrings



A. Sapphire & diamond necklace B. Emerald & diamond pendant C. Ruby & diamond necklace D. Sapphire & diamond fluted clover pendant E. 1/6 carat tw starlit petals earrings F. 1/6 carat tw starlit petals pendant G. Ruby & diamond fluted heart pendant H. 1/4 carat tw double heart pendant J. 1/4 carat tw baguette necklace K. 1/4 carat tw hexagon pendant



## Heirloom *romance*

\* Denotes 10kt Gold

BRIDESMAID

A. Green amethyst & diamond pendant B. Citrine & diamond pendant C. Pearl & diamond pendant D. Pearl & diamond earrings E. Pearl & diamond station necklace F. 1/4 carat tw cross pendant G. 1/4 carat tw cross pendant H. 1/6 carat tw cross pendant J. 1/3 carat tw pear pendant K. 1/2 carat tw pear earrings \$2,895 L. 1/8 carat tw heart chain bracelet M. 1/6 carat tw butterfly chain bracelet

Jewelry images shown may have been enlarged or retouched to show details. Prices shown may change without notice due to market conditions and fluctuations. Diamond carat total weight (ctw) represents the approximate carat total weight of all the diamonds set, unless noted. Diamond total weights may vary between 0.01 and 0.07 ct. All pendants priced with chains. Natural colored diamonds may have been treated or enhanced by heating or irradiation. Natural colored gemstones may have been treated or enhanced by heating, irradiation, oiling, filling, or diffusion. Photographic, typographical, and print errors are subject to correction. Some styles featured in the catalog may not be immediately available, but may be ordered.



# JAY'S JEWELRY

*House of Diamonds*

327 W Chickasha Ave. Chickasha, OK 73018  
Phone: (405) 224.9021



SCAN ON YOUR SMART PHONE OR LOG ONTO  
[www.jaysjewelry.com](http://www.jaysjewelry.com)